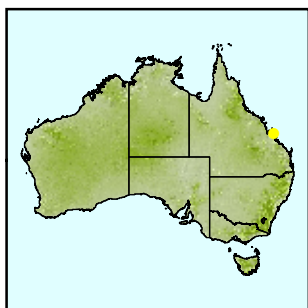
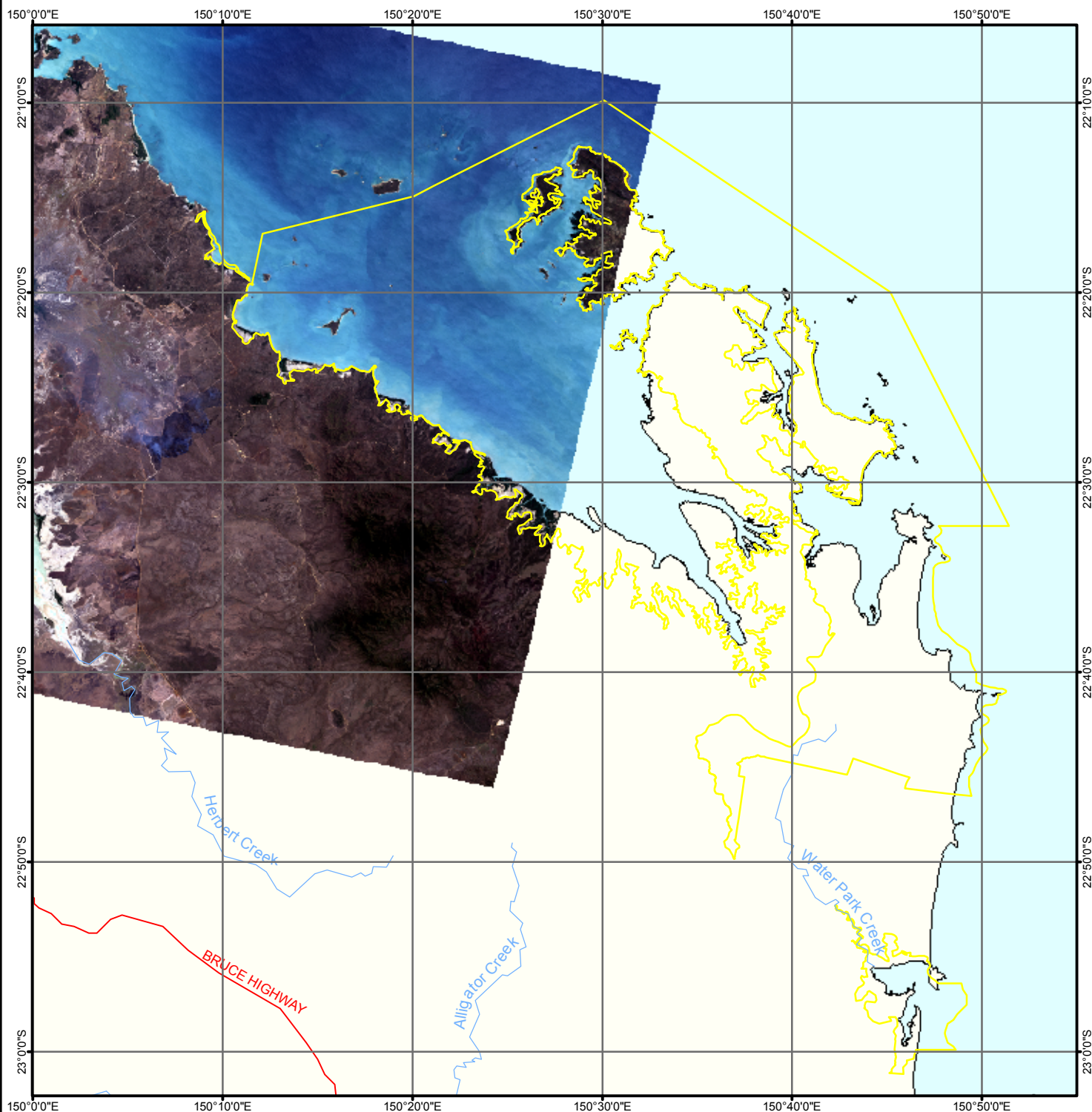


# Shoalwater and Corio Bays Area (Shoalwater Bay Training Area, in part - Corio Bay), QLD



- Main Roads
- Main Rivers
- Ramsar Wetlands

Data Sources:  
 Roads  
 © Commonwealth of Australia, Geoscience Australia, 2004;  
 Rivers  
 © Commonwealth of Australia, Geoscience Australia;  
 Ramsar Wetlands  
 © Commonwealth of Australia (2001), State and Territory Borders  
 © Commonwealth of Australia, Geoscience Australia, 2001;  
 ALOS AVNIR2  
 © Japan Aerospace Exploration Agency ("JAXA") 2006.

Caveats:  
 The data has been used in this map with the permission of JAXA and the Commonwealth of Australia (Geoscience Australia) ("the Commonwealth"). JAXA and the Commonwealth have not evaluated the data as altered and incorporated within this map, and therefore give no warranty regarding its accuracy, completeness, currency or suitability for any particular purpose.

All data are presumed to be correct as received from data providers. No responsibility is taken by the Commonwealth for errors or omissions, and the Commonwealth does not accept responsibility in respect to any information or advice given in relation to, or as a consequence of anything contained herein.

Map produced by Environmental Resources Information Network,  
 Australian Government, Department of the Environment, Water, Heritage and the Arts.  
 September 2009

Geographic Coordinate System, GDA-94 Datum



Australian Government  
 Department of the Environment,  
 Water, Heritage and the Arts

