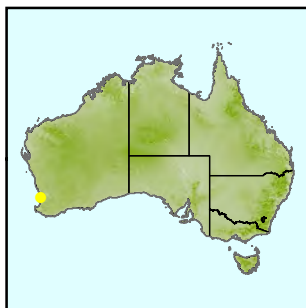
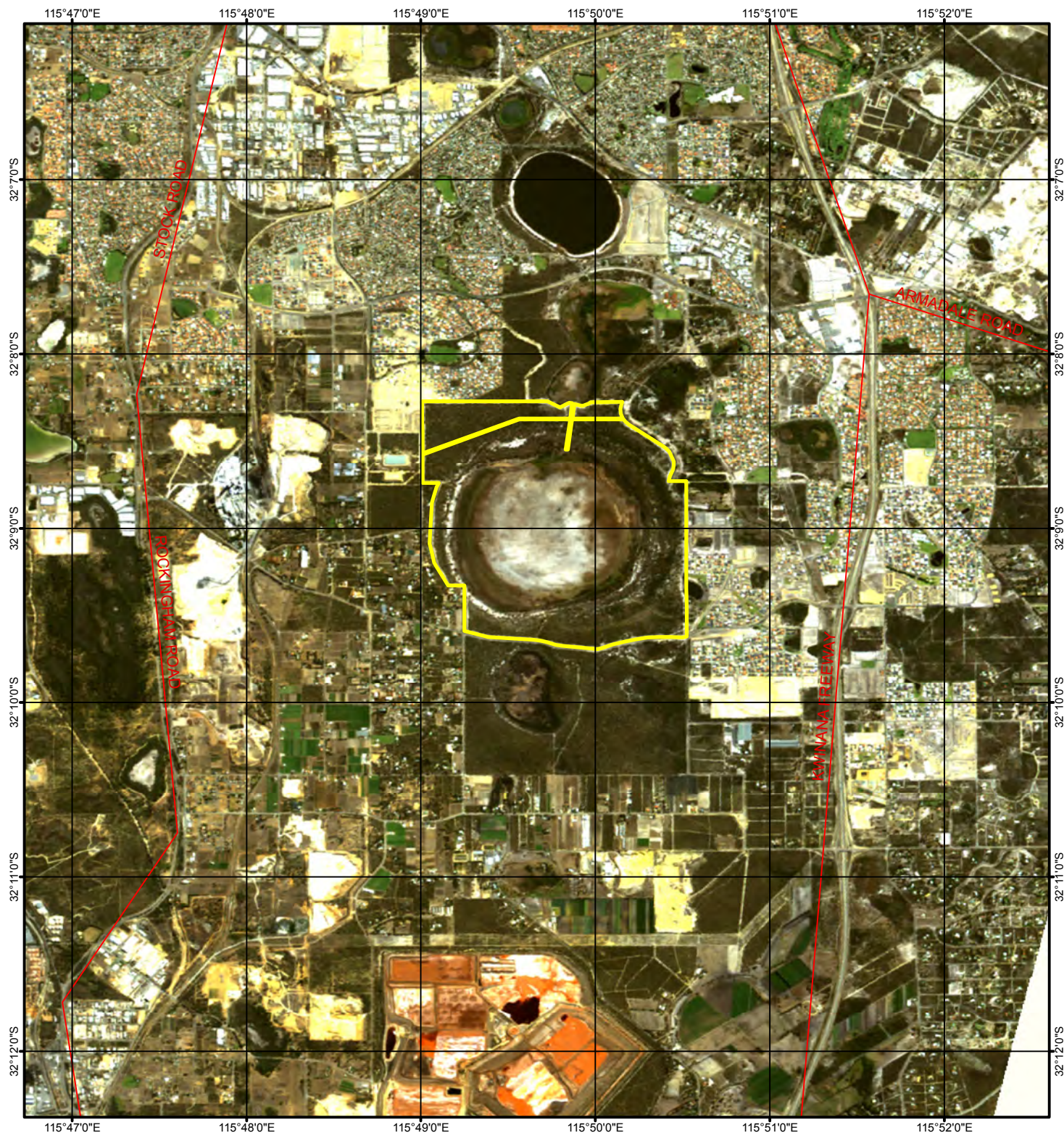


Forrestdale and Thomsons Lakes, WA

Thomsons Lake



- Towns
- Main Roads
- Ramsar Wetlands

Data Sources:

Localities
 © Commonwealth of Australia, Geoscience Australia, 2001;
 Roads
 © Commonwealth of Australia, Geoscience Australia, 2004;
 Ramsar Wetlands
 © Commonwealth of Australia (2001),
 Waterbodies, State and Territory Borders
 © Commonwealth of Australia, Geoscience Australia, 2001;
 ALOS AVNIR2
 © Japan Aerospace Exploration Agency ("JAXA") 2007.

Caveats:

This map incorporates data which is © Commonwealth of Australia - ACRES, Geoscience Australia. The data has been used with the permission of the Commonwealth of Australia (Geoscience Australia) ("the Commonwealth"). The Commonwealth have not evaluated the data as altered and incorporated within this map, and therefore give no warranty regarding its accuracy, completeness, currency or suitability for any particular purpose.

All data are presumed to be correct as received from data providers. No responsibility is taken by the Commonwealth for errors or omissions, and the Commonwealth does not accept responsibility in respect to any information or advice given in relation to, or as a consequence of anything contained herein.

Map produced by Environmental Resources Information Network,
 Australian Government, Department of the Environment, Water, Heritage and the Arts.
 April 2008

Geographic Coordinate System, GDA-94 Datum



0 0.5 1 2 3 Kilometres