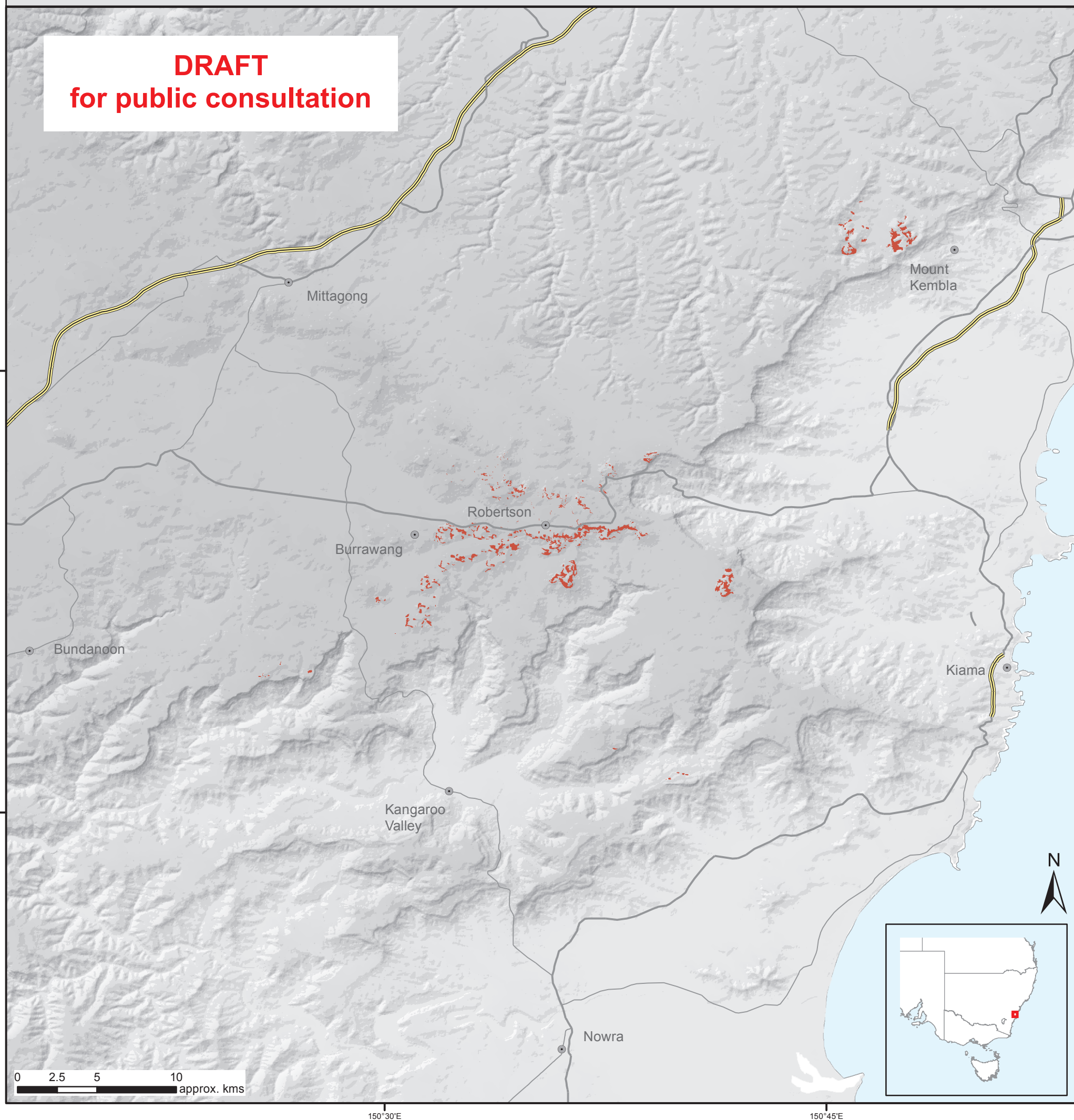



# Robertson Rainforest in the Sydney Basin Bioregion

**DRAFT**  
for public consultation



## Legend

 Robertson Rainforest in the Sydney Basin Bioregion  
- Likely to occur



**Australian Government**  
**Department of the Environment and Energy**

Method:  
Map Units SR615 and HN581 (1)

Source:  
Localities 1:250,000, © Commonwealth of Australia (Geoscience Australia) 2006.  
Roads 1:1,000,000, © Commonwealth of Australia (Geoscience Australia) 2001.  
Coastline 1:100,000 © Commonwealth of Australia (Geoscience Australia) 2006.  
(1) 'SE\_LLS\_Biometric\_2014\_E\_4211', NSW vegetation dataset.

Caveat:  
The information presented in this map has been provided by a range of groups and agencies. While every effort has been made to ensure accuracy and completeness, no guarantee is given, nor responsibility taken by the Commonwealth for errors or omissions, and the Commonwealth does not accept responsibility in respect of any information or advice given in relation to, or as a consequence of, anything contained herein. The map has been collated from a range of sources, with data at various resolutions. Data used are assumed to be correct as received from the data suppliers.

Produced by:  
ERIN (Environmental Resources Information Network)  
Department of the Environment and Energy  
Australian Government  
December 2018  
© Commonwealth of Australia, 2018 .

Projection: Geographic  
Datum: GDA 1994  
1:250,000